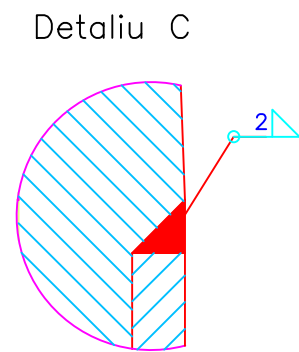
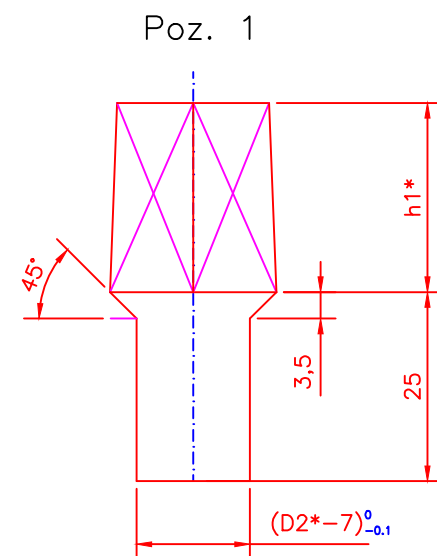
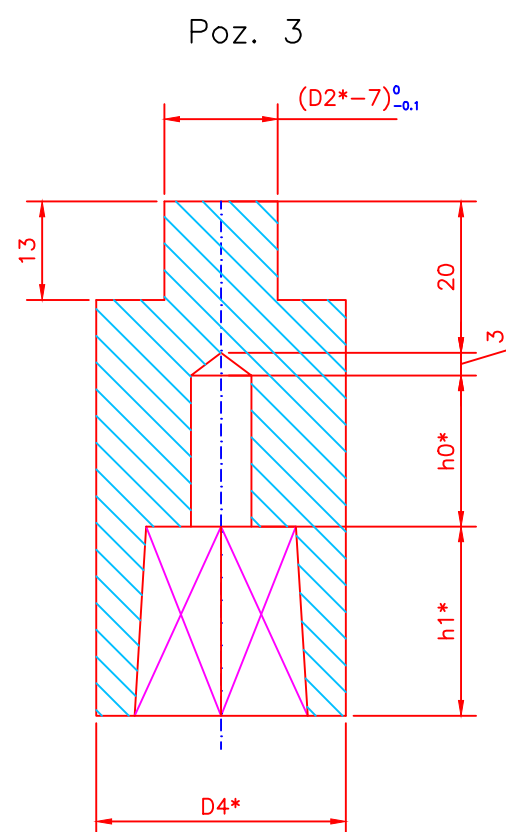
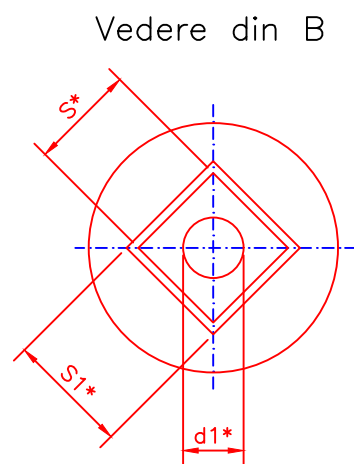
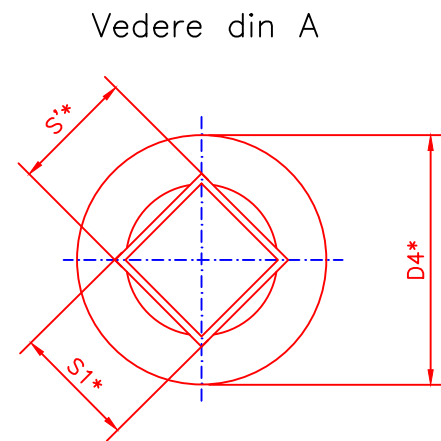
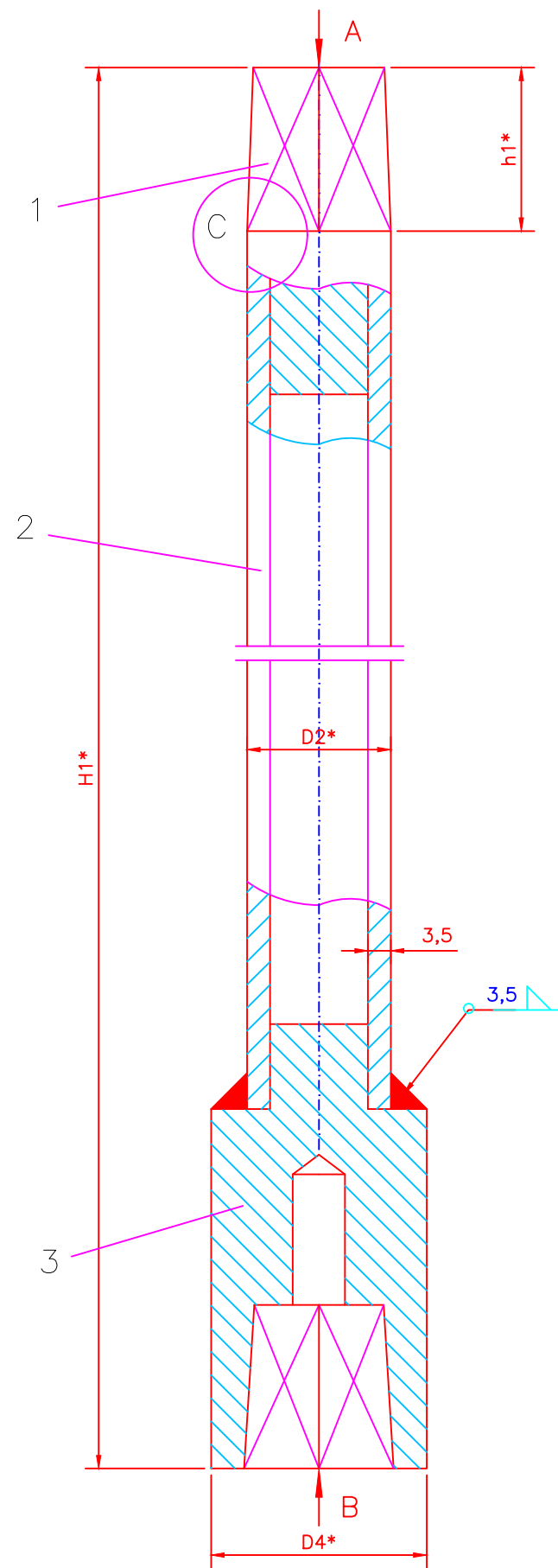



Acesta este desen CAD si nu va fi modificat manual



NOTA:

Toate cotele notate cu * se vor determina dupa achizitia robinetului cu sertar pana pentru fiecare diametru.

3	Piesa legatura tija robinet			1	OL 37.2	-	
2	Teava		STAS 404/1-87	1	OLT 35	-	
1	Piesa de legatura roata manevra		-	1	OL 37.2	-	
Poz.	DENUMIRE		Nr. desen sau STAS	BUC	MATERIAL	OBSERVATII	MASA kg/buc
0	12.2023	Tema de proiectare conform caiet de sarcini	Documentatie avizata		Victor DINITA	Liviu ANDREI	Antonio TACHE
REVIZIA	DATA	DESCRIEREA REVIZIEI			REVIZUIT	VERIFICAT	APROBAT
MATERIAL		MASA NETA		SCARA PLAN		DATA	
-		-		N/A		12.2023	
Masurat	Victor DINITA	Punerea în siguranta a conductelor de 12" si 14" Cartojani-Ploiesti la traversarea pâraului Cricovul Dulce					Nr. Proiect CON-005 2021
Desenat	Victor DINITA						
Verificat	Liviu ANDREI						
Aprobat	Antonio TACHE						
		Prelungitor tija					
		CON-005-2021-17					PLANSĂ 1/1